

**Annex 4/8: Country Report of SEAFDEC/TD**

By Mr. Sayan Promjinda and Mr. Nakaret Yasook

# REGIONAL FISHING TRIALS AND RESOURCES SURVEY (DEEP SEA)

BY

SEAFDEC/TD (2004 - PRESENT)

## M.V. SEAFDEC2 Cruise No.

24-2/2007 Andaman Sea, Thailand

15 March – 23 April 2007 (1<sup>st</sup> sea trial for bottom otter trawl)

28-1/2008 Andaman Sea, Thailand

3 March – 4 April 2008 (1<sup>st</sup> sea trial for beam trawl and IKMT)

29-2/2008 Brunei Waters, Brunei Darussalam

4 June – 5 July 2008 (Bottom otter trawl, Beam trawl, IKMT)

30-3/2008 Andaman Sea, Thailand

24 November – 25 December 2008 (IKMT)

31-1/2009.....Brunei Waters, Brunei Darussalam

6 March – 11 April 2009 (Bottom otter trawl, Beam trawl, IKMT)

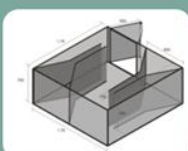
## Sampling Equipment



Bottom Otter Trawl

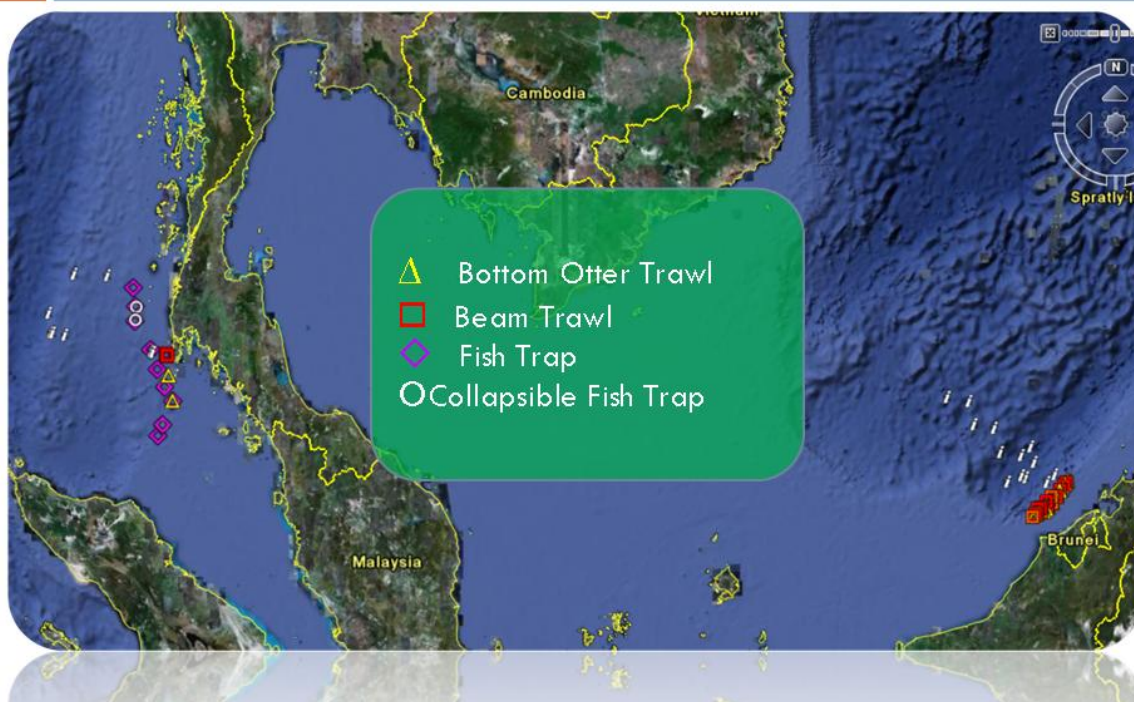


Beam Trawl

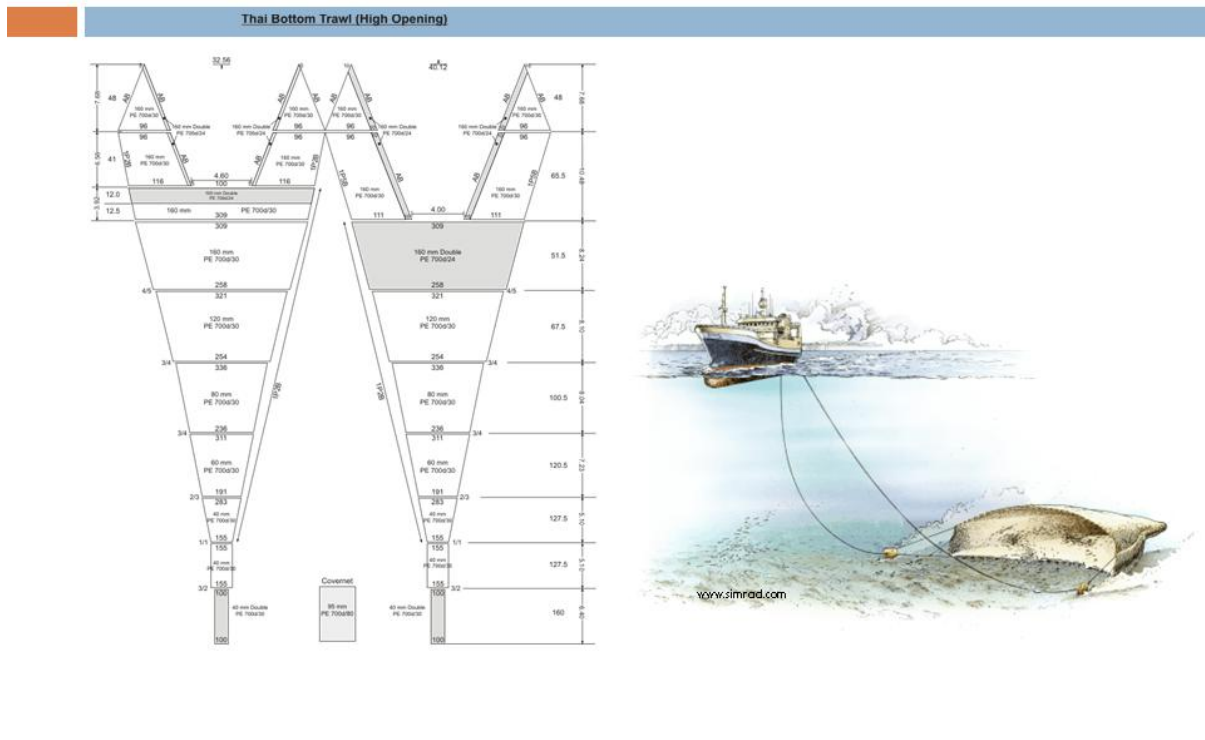


Trap

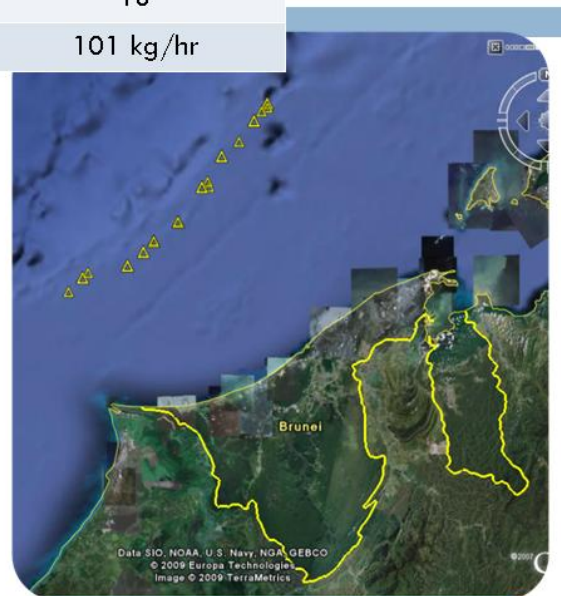
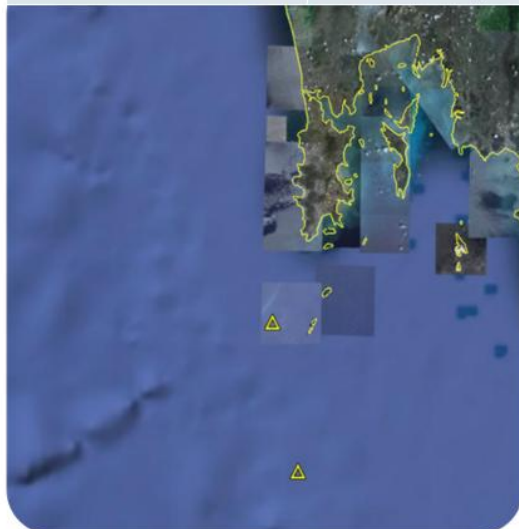
## Survey stations



# Bottom Otter Trawl



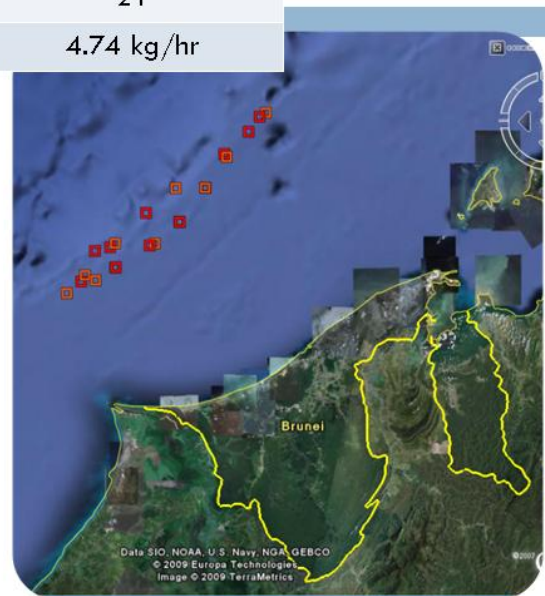
	Andaman Sea	Brunei Waters
Depth of operation	120 m	100 – 160 m
Number of operation	2	18
CPUE	260 kg/hr	101 kg/hr



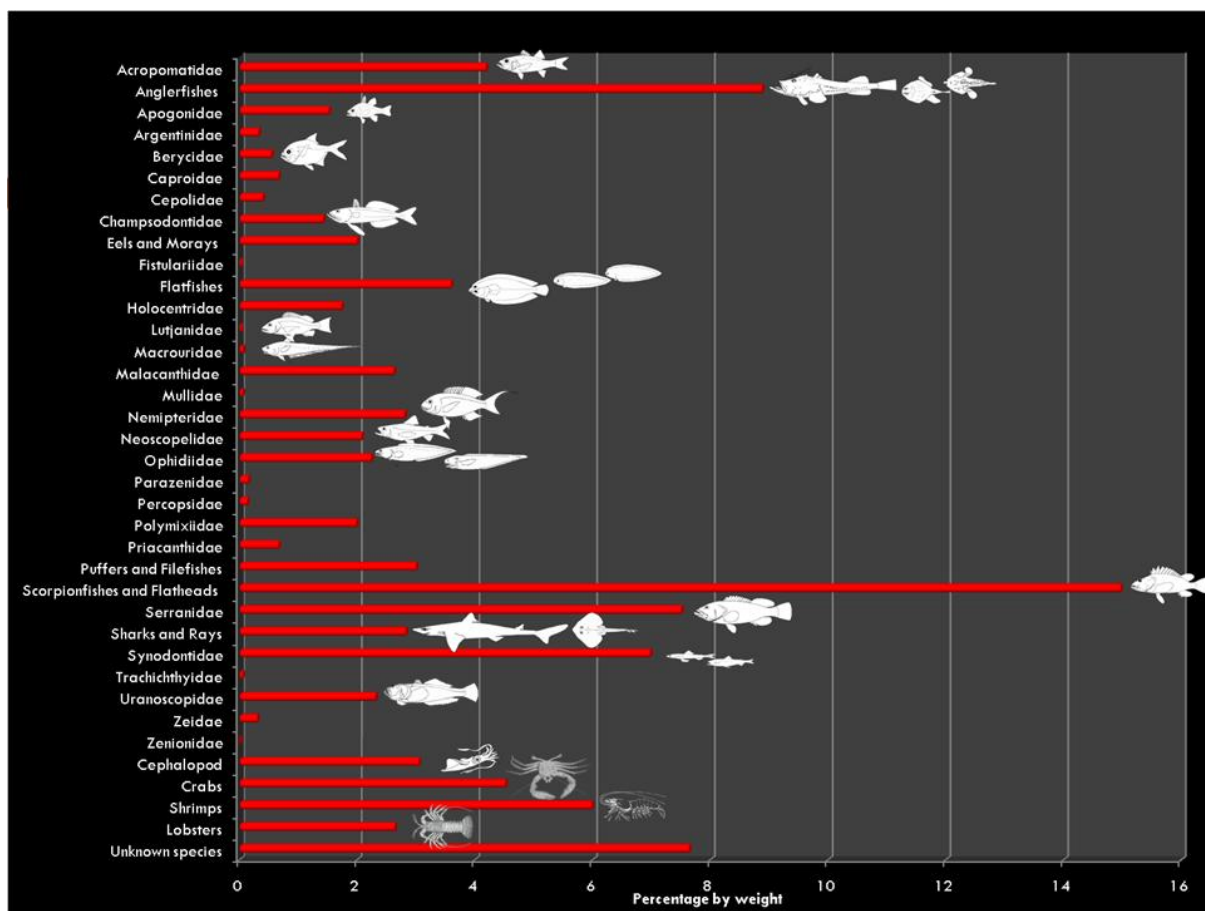
Bottom otter trawl



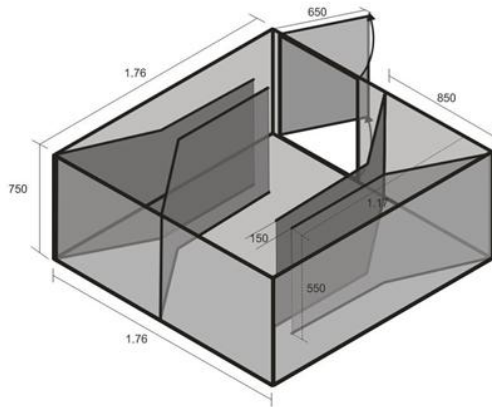
	Andaman Sea	Brunei Waters
Depth of operation	70 - 80 m	100 – 370 m
Number of operation	3	21
CPUE	4.02 kg/hr	4.74 kg/hr



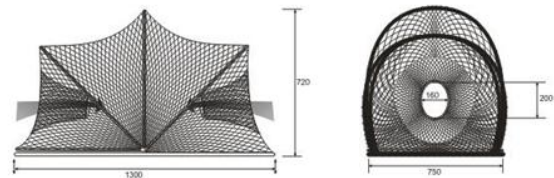
Beam trawl



# Trap

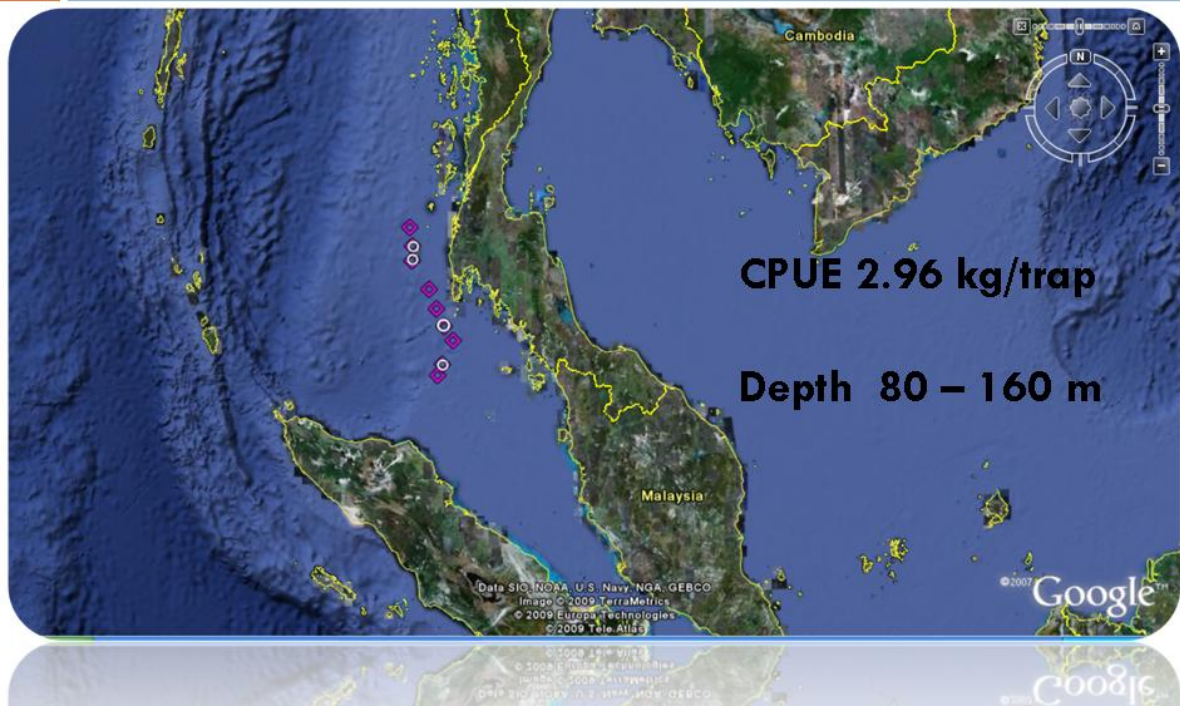


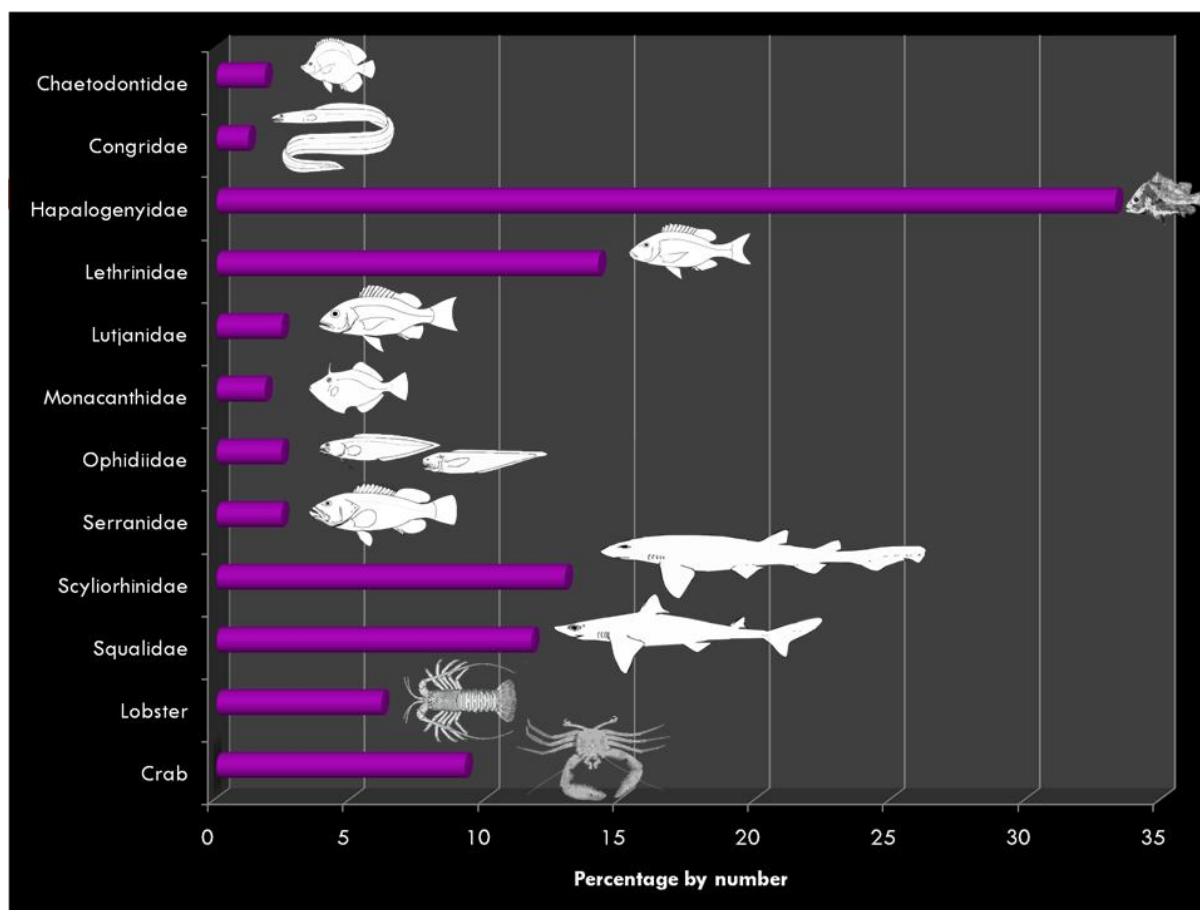
Giant fish trap (DOF)



Collapsible fish trap

# Trap operation stations





	Equipment	Depth of operation (m)	Number of operation	CPUE
Andaman Sea	Bottom otter trawl	120	3	260 kg/hr
	Beam trawl	70-80	2	4.02 kg/hr
	Trap	80-160	9	2.96 kg/trap
Brunei Waters	Bottom otter trawl	100-160	18	101 kg/hr
	Beam trawl	100-370	21	4.74 kg/hr



## References Books

